

Pedicle Screw Fixation

Introducing invetra™



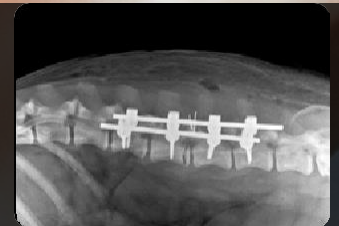
Wednesday 2nd July 2025

ECVS Congress 2025, Antwerp

Course Cost: €600

Course Agenda

- 08:45 **Welcome**
- 09:00 **Lecture** - Introduction to pedicle screw technology
- 10:00 **Lecture** - Introduction to the equipment
- 10:30 **Lab demonstration** - Application of 4.5mm invetra™. Applied to abnormal lumbosacral joint of a German Shepherd
- 11:00 **Break**
- 11:15 **Lecture** - Use of pedicle screw on lumbosacral and lumbar spine
- 12:00 **Lunch**
- 12:45 **Laboratory** - Application of 4.5mm invetra™ Applied to abnormal lumbosacral joint of a German Shepherd
- 13:30 **Lecture** - Techniques for stabilisation of the thoracic and cervical spine using invetra system
- 14:15 **Laboratory** - Thoracic and cervical fixation using invetra™ 3.0mm system
- 15:00 **Case Presentations**
- 16:00 **Close**



Faculty

Bob Bergman DVM, MS, DACVIM (Neurology) &
Scott Rutherford CertSAS, DipECVS, MRCVS, RCVS

Anatomical lumbar sawbone and implants are yours to keep

neuromed

Advancements in veterinary neurologic care

For more information call or book online

+44 (0) 1484 905011

info@neuromedvet.com www.neuromedvet.com